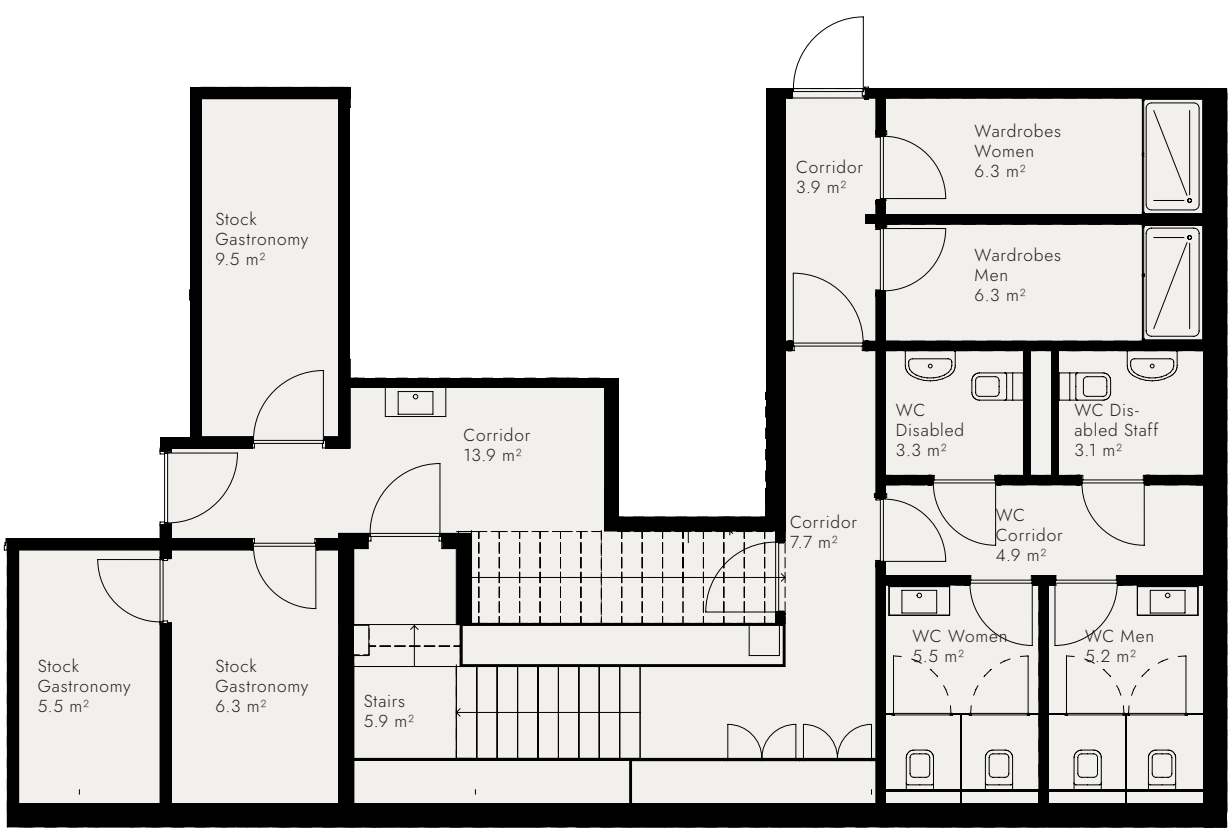


**Gastronomy
Lower Floor**

Tower fifty five

Total area 87.3 m²



All information, plans, drawings, etc. are non-binding.
All area specifications are approximate.
We reserve the right to make changes until completion of construction.
Status September 2022

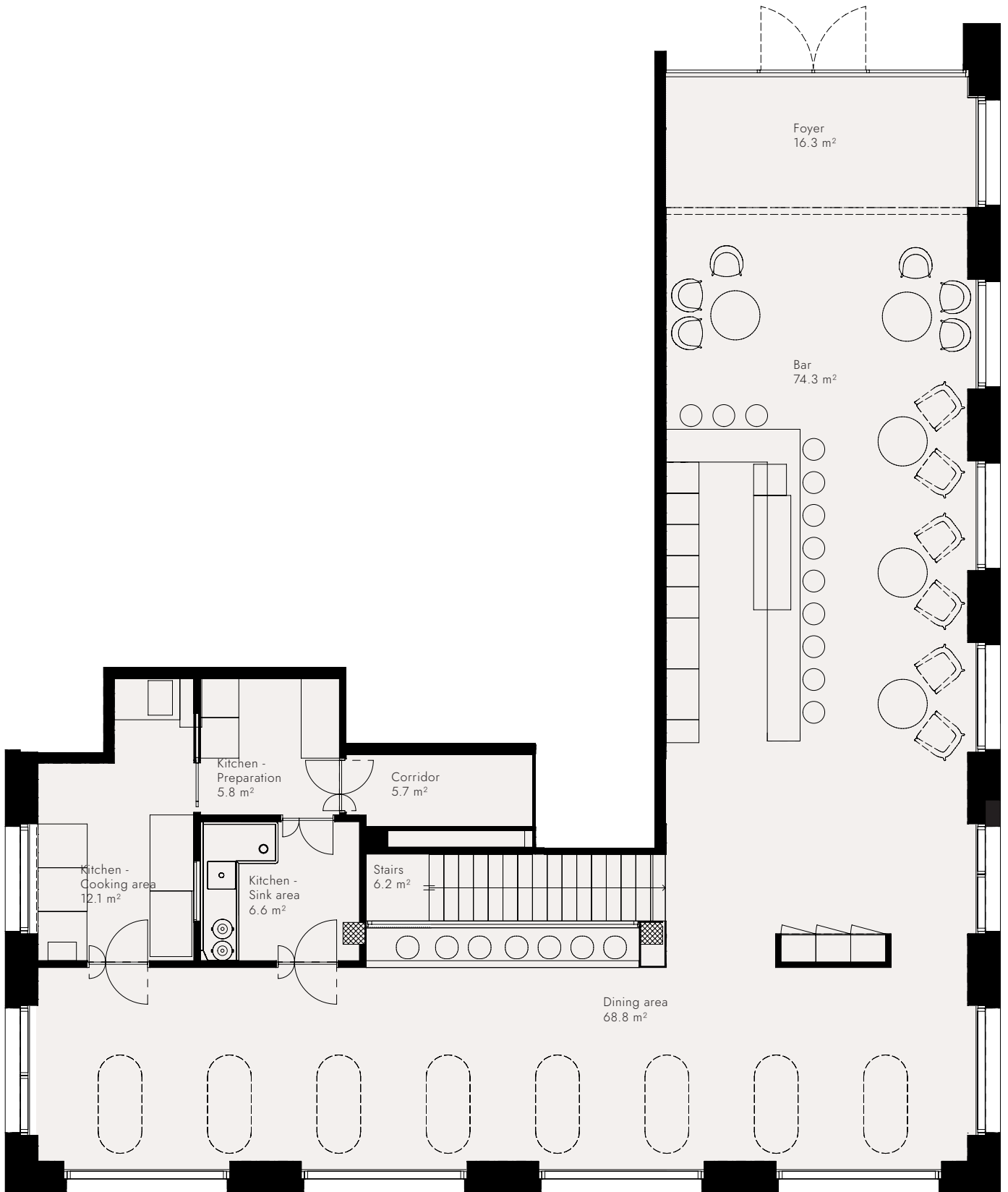
Scale 1:100
0 1m



Gastronomy
Ground Floor

Total area 195.8 m²

Tower fifty five



All information, plans, drawings, etc. are non-binding.
All area specifications are approximate.
We reserve the right to make changes until completion of construction.
Status September 2022

Scale 1:100
0 1m

